

RRP prices  
1.7.2020 - 31.12.2020

## SuperSpeed CNC series





## | SuperSpeed series |



### Manual driven machine

**inclusive:** rollholder top and side (with one bar),  
changeable height 85-100cm, 6x Up/Down button, 12 months warranty

	final price
<b>SuperSpeed 300/160</b>	<b>8260,-€</b>
<b>SuperSpeed 300/210</b>	<b>11200,-€</b>
<b>SuperSpeed 400/160</b>	<b>8810,-€</b>
<b>SuperSpeed 400/210</b>	<b>11934,-€</b>
<b>SuperSpeed 500/160</b>	<b>11310,-€</b>

500/210, 600/160, bigger stroke and another custom on request... Model 500/160, 500/210 and 400/210 have to be installed fixed on legs.



**CashBack 2020,-€ + 5 year warranty after registration**



### SuperSpeed drive and EasyShift upgrade kit

<b>SuperSpeed drive kit *</b>	<b>4350,-€</b>
<b>extended 5 year warranty</b>	<b>680,-€</b>



*Each SuperSpeed frame is motor ready...  
The Drive can be added to any SuperSpeed machine at any time.*

\*12 months warranty

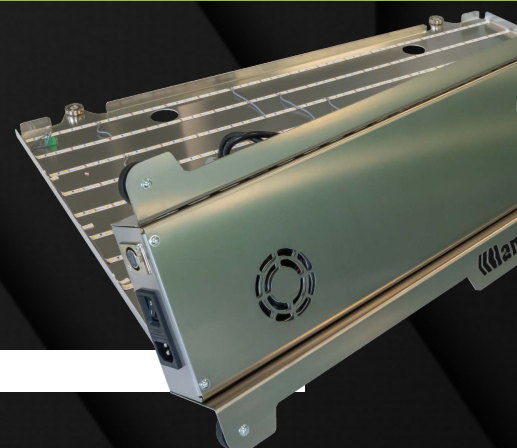


### SuperSpeed backlight LED kit

<b>SuperSpeed LED 300/160</b>	<b>1540,-€</b>
<b>SuperSpeed LED 300/210</b>	<b>1860,-€</b>
<b>SuperSpeed LED 400/160</b>	<b>1705,-€</b>
<b>SuperSpeed LED 400/210</b>	<b>2170,-€</b>
<b>SuperSpeed LED 500/160</b>	<b>2020,-€</b>
<b>extended 5 year warranty</b>	<b>252,-€</b>

*Each SuperSpeed frame is factory pre-wired and fitted with connectors...*

\*all LEDs 12 months warranty



### Individual color

<b>accessories colors</b>	<b>252,-€</b>
<b>custom frame color</b>	<b>590,-€</b>

## | SuperSpeed series - Accesories |



### Cutting mats

final price

for Lamidesk EASY SHIFT 300/160	651,-€
for Lamidesk EASY SHIFT 300/210	784,-€
for Lamidesk EASY SHIFT 400/160	812,-€
for Lamidesk EASY SHIFT 400/210	980,-€
for Lamidesk EASY SHIFT 500/160	1015,-€



### Integrated compressor

final price

LC 30 for all Lamidesks supersilent 40dB	690,-€
0,34kW, 33l/min, 8bar, 24l tank, 650x250x490, 26kg	



### Stand-alone compressor

final price

LC 30 for all Lamidesks supersilent 40dB	530,-€
0,34kW, 33l/min, 8bar, 24l tank, 650x250x490, 26kg	



### Rollstand

distributor

<b>PLYWOOD ROLLSTAND</b>	110,-€
11 rolls - core 76mm	

<b>STAINLESS STEEL ROLLSTAND</b>	240,-€
14 rolls - core 76mm	





## | Terms and Conditions |

### Prices:

#### Prices:

All prices are net prices, excluding VAT, EXW Vyšší Brod ZIP: 382 73 - Czech Republic

### Retention of title:

The delivered goods remains the property of the contractor until full payment has been received or until the check or bill of exchange has been honored.

### Terms of warranty:

The warranty includes only spare parts needed to repair the machine.

The distributor is responsible to repair the machine and to send a request for the needed spare parts to Lamidesk. Lamidesk will offer a second level support for the distributor. It means Lamidesk will assist the distributor to define the error and give assistance, how to repair the machine, by phone.

Lamidesk will ship spare parts to an address recommended from the distributor. Damaged parts have to be sent immediately back to factory. If we don't receive these parts in 3 weeks after receiving new parts, we will invoice them to distributor.

Customer has to make proper and consistent photo documentation of delivered goods before unloading and immediately unpack it before the forwarder leaves. On the delivery note the customer confirms the goods was delivered without any obvious defects.

#### **There is no warranty on the glass of working table!**

There is no warranty, if the error results from vandalism or misusing the machine.

Furthermore, there is no warranty on roller, if there are cuts or wholes, done by the user.

To avoid losing warranty on machine, the machine should be used only with eligible materials. If unsuitable materials were used there, or the machine was used incorrectly, the client loses the right to the warranty.

All demands of warranty have to be sent in a written notice to:

#### **Lamidesk s.r.o.**

Street: **Hrudkov 79**

City: **Vyšší Brod, ZIP: 382 73**

Country: **Czech,**

VAT: **CZ05657741**

phone: **+420 604 349 624**

### Machine ordering, information about delivery:

fakturace@lamidesk.cz    +420 734 231 910

### Spare parts ordering:

sklad@lamidesk.cz    +420 604 264 029

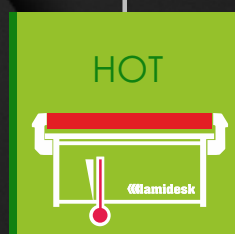
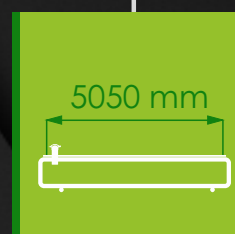
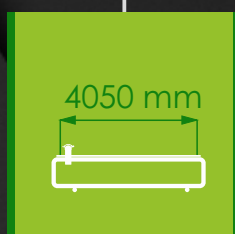
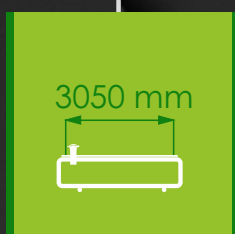
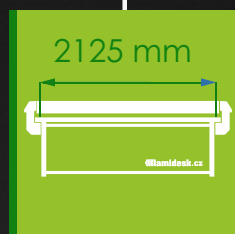
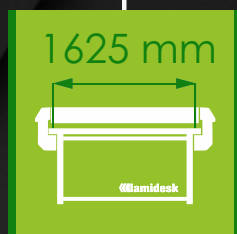
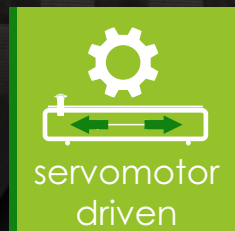
### Technical and sell support:

lamidesk@lamidesk.cz    +420 604 349 624



## MACHINE MODELS

each SuperSpeed frame is motor ready...  
The Drive can be added to any  
SuperSpeed machine at any time.



each SuperSpeed frame is factory  
pre-wired and fitted with connectors...  
The backlight set can be added to any  
SuperSpeed machine at any time.

